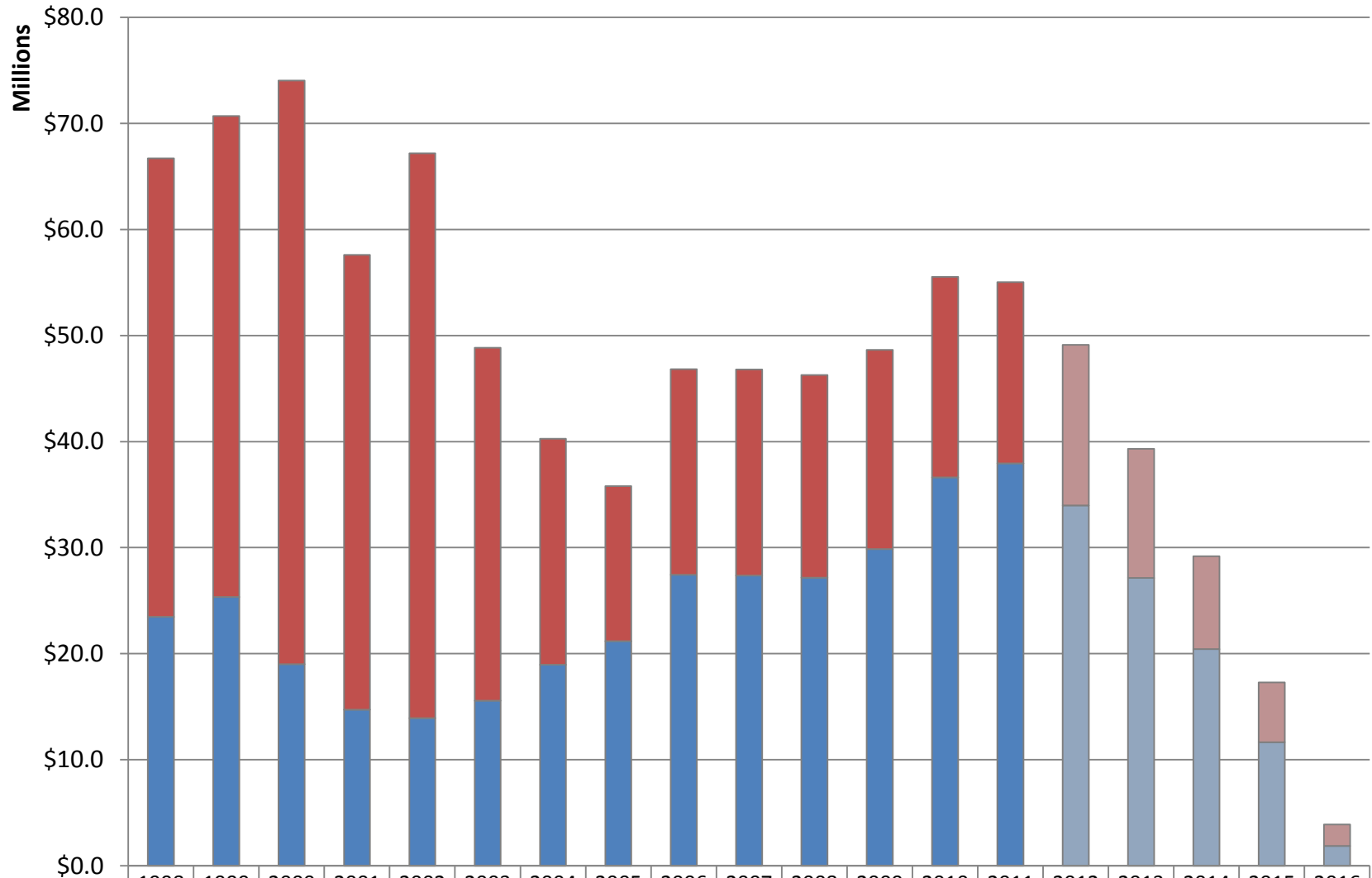


## District 15 Fund Balances

### Education and Other Funds



	1998	1999	2000	2001	2002	2003	2004	2005	2006	2007	2008	2009	2010	2011	2012	2013	2014	2015	2016
Other Funds	\$43.2	\$45.4	\$55.0	\$42.9	\$53.3	\$33.3	\$21.3	\$14.6	\$19.4	\$19.4	\$19.1	\$18.8	\$18.9	\$17.1					
Education Fund	\$23.5	\$25.3	\$19.0	\$14.7	\$13.9	\$15.6	\$19.0	\$21.2	\$27.4	\$27.4	\$27.2	\$29.8	\$36.6	\$38.0					
Other Funds Forecast															\$15.2	\$12.2	\$8.8	\$5.6	\$2.0
Education Fund Forecast															\$34.0	\$27.1	\$20.4	\$11.7	\$1.9

NOTE: Includes all funds except the Debt Service fund. SOURCE: District 15 Annual Financial Reports and February 2012 forecast.